



## SEWAIR-MINI<sup>®</sup>

**SIZE RANGE:** 2 - 3 inch (50 mm - 80 mm)

**MAX TEMP:** 150°F (65°C)

**MAX PRESSURE:** 150 PSI\*

SEWAIR-MINI<sup>®</sup> - Cast iron body, 303 stainless steel trim. Threaded female x female connections. NITRILE (Buna-N) seat. ¼" orifice-for waste water application. Vents under line pressure.

Inlet Pressure MIN: 20 PSI\*

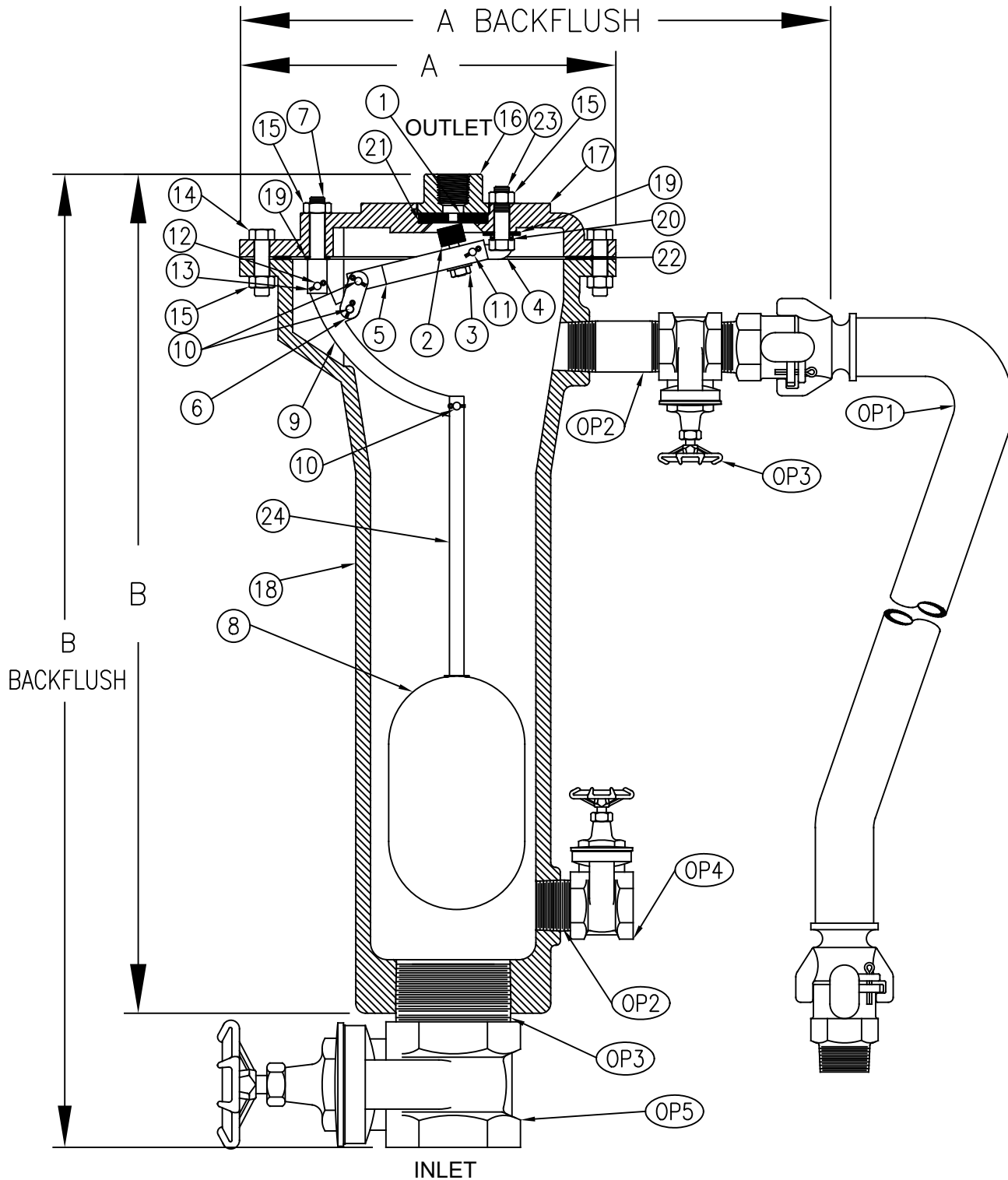
Inlet Pressure MAX: 150 PSI\*

**Warranty:** 1 Year

**Discount Code B**  
FOB Factory

[SUBMIT RFQ](#)

## Materials



Drawing Shown with Optional Backflush

Flomatic Corporation can accept no responsibility for possible errors in catalogues, brochures and other printed material. Flomatic Corporation reserves the right to alter its products without notices. This also applies to product already agreed. All trademarks in this material are property of the respective companies. All rights reserved. ©2024 Flomatic Corporation. The drawings & information on this drawing sheet are the sole & exclusive property of Flomatic Corporation. Any reproduction, distribution, display or use of these drawings or information in whole or in part without written authorization of Flomatic Corporation is strictly prohibited. [www.flomatic.com](http://www.flomatic.com)

## Materials

Optional Orifice Ø	Max. Working Pressure
* 1/4"	150 PSIG
1/8"	300 PSIG

\*Standard operating pressure is: minimum 20 psig & maximum 150 psig. Consult factory for pressure outside this range.

Optional Backflush			
Item #	Description	Material	ASTM
OP1	Backflush Assembly	See SBF2-3	-----
OP2	Nipple	Steel	A53
OP3	Nipple	Steel	A53
OP4	Shut-Off Valve	Brass	N/A
OP5	Shut-Off Valve	Brass	N/A

Item #	Description	Material	ASTM	Item #	Description	Material	ASTM
1	Seat	PVC	1784	13	Cotter Pin	Stainless Steel	A240
2	Valve Plunger	Buna-n/SS	D2000/A193	14	Bolt	Steel	A307
3	Nut	Stainless Steel	A194	15	Nut	Steel	A563
4	Valve Fulcrum	Stainless Steel	A240	16	*Top	Cast Iron	A126
5	Valve Lever	Stainless Steel	A582	17	*Flange	Cast Iron	A126
6	Link	Stainless Steel	A240	18	*Body	Cast Iron	A126
7	Ball Fulcrum	Stainless Steel	A582	19	Fulcrum Washer	Fibre	D710
8	Float	Stainless Steel	A240	20	Fulcrum Washer	Fibre	D710
9	Ball Lever	Stainless Steel	A240	21	Seat Washer	Fibre	D2000
10	Bearing Pin	Stainless Steel	A582	22	Flange Gasket	Armstrong	N-8090
11	Bearing Pin	Stainless Steel	A582	23	Bolt	Stainless Steel	A193
12	Bearing Pin	Stainless Steel	A582	24	Float Rod	Stainless Steel	A582

\*2" Material Ductile Iron 65-45-12  
Drawing Shown with Optional Backflush

## Dimensions (FNPT)

Max. Temp 150°F (65°C)

### ANSI B1.20.1

Size		Part #	BF Part #	A		A with Backflush		B		B with Backflush		Inlet Size		Outlet Size		Weight		Weight with Backflush	
inch	mm			inch	mm	inch	mm	inch	mm	inch	mm	inch	mm	inch	mm	lbs	kg	lbs	kg
2	50	6600	BF2	9.69	246	11.25	286	21.50	546	25.25	641	2	50	1/2	15	49	23	60	28
3	75	6601	BF3	9.69	246	11.25	286	21.50	546	27.25	692	3	75	1/2	15	49	23	66	30

Meets AWWA C-512

Flomatic Corporation can accept no responsibility for possible errors in catalogues, brochures and other printed material. Flomatic Corporation reserves the right to alter its products without notices. This also applies to product already agreed. All trademarks in this material are property of the respective companies. All rights reserved. ©2024 Flomatic Corporation. The drawings & information on this drawing sheet are the sole & exclusive property of Flomatic Corporation. Any reproduction, distribution, display or use of these drawings or information in whole or in part without written authorization of Flomatic Corporation is strictly prohibited. [www.flomatic.com](http://www.flomatic.com)